



# TigerTrak

## TT2304 Instructions

W16, W18, W20, W22 and W24 Workhorse  
Motor Home Chassis Front Bar



**! ATTENTION**

Use these torque specs, **UNLESS** otherwise specified.

**Tools Required**

1-1/8" Combo Wrench	1-1/8" Socket
3/4" Combo Wrench	3/4" Socket
1/2" Drive Ratchet	15/16" Socket
1/2" x 6" Drive Extension	Torque Wrench

Torque Specs	
Bolt Description	Torque Spec.
1/2 x 4.5 U-bolt	75 ft/lbs
1/2 x 1 1/2 USS GR. 8	95 ft/lbs
1/2 x 2 USS GR. 8	95 ft/lbs
1/2 x 2 1/2 USS GR. 8	95 ft/lbs
1/2 x 3 USS GR. 8	95 ft/lbs
1/2-13 x 1 SQ. Set Screw	75 ft/lbs
1/2 x 1 1/4 SAE GR. 8	75 ft/lbs
5/8 x 2 SAE GR. 8	150 ft/lbs
5/8 x 2 3/4 SAE GR. 8	150 ft/lbs
3/4 x 3 SAE GR. 5	150 ft/lbs
3/4 x 3 1/2 SAE GR. 5	150 ft/lbs
3/4 X 5 SAE GR. 5	150 ft/lbs
12-1.75 x 55 MM HEX 10.9	65 ft/lbs
12-1.75 x 120 MM HEX 10.9	65 ft/lbs
12-1.75 MM HEX NUT 10.9	65 ft/lbs
14-2.0 x 40 MM HEX 10.9	125 ft/lbs
14-2.0 x 80 MM HEX 10.9	125 ft/lbs

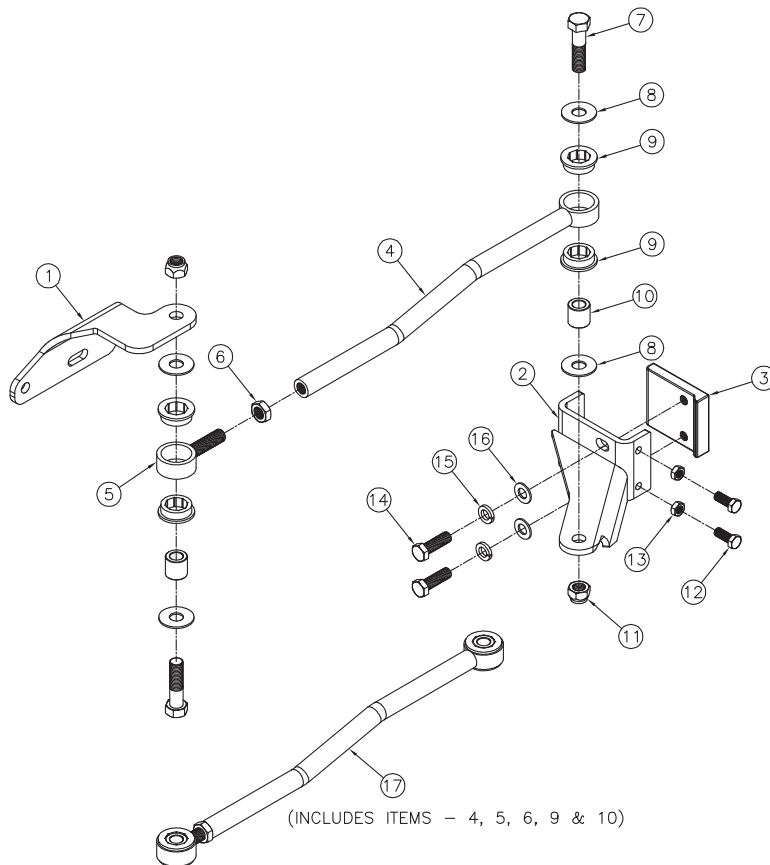
# TigerTrak

## TT2304 Instructions

### W16, W18, W20, W22 and W24 Workhorse Motor Home Chassis Front Bar

## Parts List

Ref. No.	Qty.	Part #	Description
1	1	101-7160	AXLE BRACKET, TT2304
2	1	61-6462	WLDM'T, FRAME MOUNT BRACKET, TT2304
3	1	229-0734	FRAME BRKT, NUT PLATE, TT2300
4	1	61-6463	WLDM'T, ROD, TT2304
5	1	61-6418	WLDM'T, ROD END, RIGHT THREAD, TT
6	1	202-0149	3/4-16 NUT, HEX JAM, ZP
7	2	201-0632	3/4-16 X 3 HEX BOLT GR 5 ZP
8	4	203-0007	3/4 FLAT WASHER, ZP
9	4	250-0217	BUSHING, URETHANE, TT
10	2	107-2969	TUBE, BUSHING INSERT, TT
11	2	202-0168	3/4-16 STOVER LOCK NUT ZP
12	2	201-0811	1/2-20 X 1 1/4" HEX BOLT, GRD.8, ZP
13	2	202-0184	1/2-20 JAM HEX NUT, GRD. 5, ZP
14	2	201-0810	5/8-18 X 2 HEX BOLT, GRD.8, ZP
15	2	203-0167	5/8" LOCK WASHER, GRD 8, ZP
16	2	203-0106	5/8 SAE FLAT WASHER, ZP
17	1	62-3638	ROD, ASSY, TT2304
	1	XA1-0049	LOCTITE RED, 262, TUBE, .02 FL. OZ. (NOT SHOWN)
	2	290-0275	8 INCH NYLON CABLE TIE (NOT SHOWN)
	1	190-0155	10 1/2" LOOM FLEX GRD .413 ID. (NOT SHOWN)



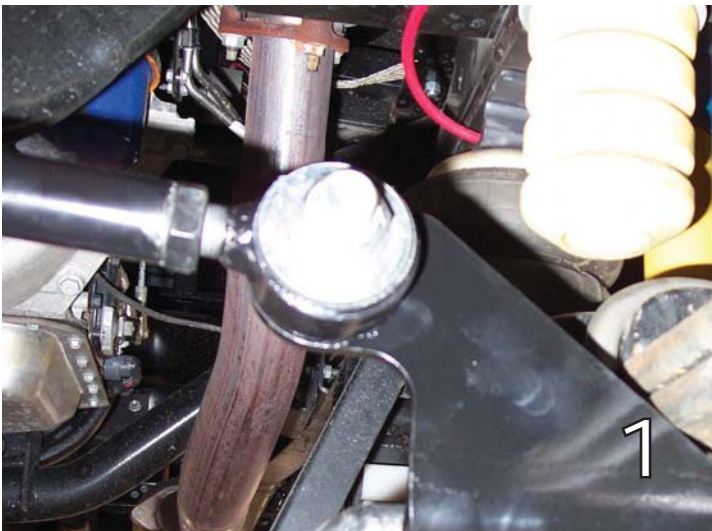
# TigerTrak

## TT2304 Instructions

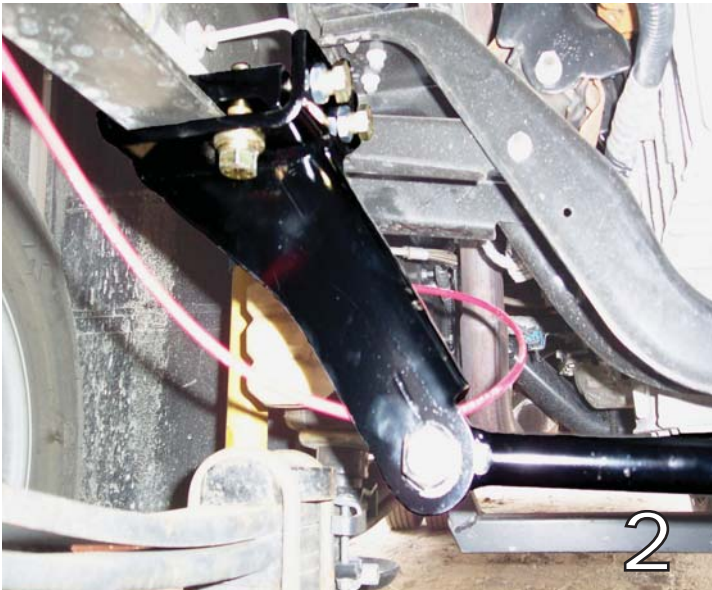
W16, W18, W20, W22 and W24 Workhorse  
Motor Home Chassis Front Bar

### Installation Instructions:

1. Move the coach to a level, flat surface. By driving the coach back and forth 10 feet once or twice, ensure the vehicle's front wheels are straight ahead before starting installation. Set the brake and chock the wheels.



2. Begin by removing the nuts on the front U-bolt on the front of the driver's side of the front axle. Place the Axle Bracket (#1) on the U-bolt (See photo 1), then replace and torque the nuts to torque spec (See chart). Use Loctite on the bolts.



## ATTENTION

A qualified mechanic using normal automotive tools and following all safety measures known should perform installation of this product.

3. Place the Frame Bracket (#2) on the outside of the passenger side frame rail in front of the axle, and loosely secure it with the Nut Plate (#3) with the supplied 5/8" x 2" bolts, (See photo 2). The bracket and Nut Plate (#3) must be able to move front to back on the frame. Install the two 1/2" x 1-1/4" bolts with jam nuts finger tight for now.

4. Now align frame bracket front to rear, so when the rod assembly is installed the frame bracket lines up with the axle bracket. Now alternately tighten the 5/8" and 1/2" bolts on the frame bracket and torque to spec. Tighten the jam nuts.

5. With the coach at normal ride height, install the Rod Assembly (#17) to the Axle Bracket (#1). Use one of the supplied 3/4" x 3" bolts, two washers and nut, and then assemble loosely. Be sure that there is a flat washer on each side of the urethane bushings. Adjust the length of the rod until you are able to assemble the supplied 3/4" x 3" bolt, two washers and nut. Check clearance between the rod and cross member, if necessary, reposition rod for clearance.

6. Tighten the 3/4" bolt and nut on the axle bracket to spec (See torque chart). Tighten 3/4" bolt and nut on the Frame Bracket (#2) to spec. Lastly, tighten the jam nut on the rod assembly. See torque chart for all tightening specs.



# BLUE OX®

© 2007 Blue Ox  
One Mill Road, Industrial Park  
Pender, Nebraska 68047

Phone: (402) 385-3051 • Fax: (402) 385-3360

[www.blueox.us](http://www.blueox.us)  
7/8/08