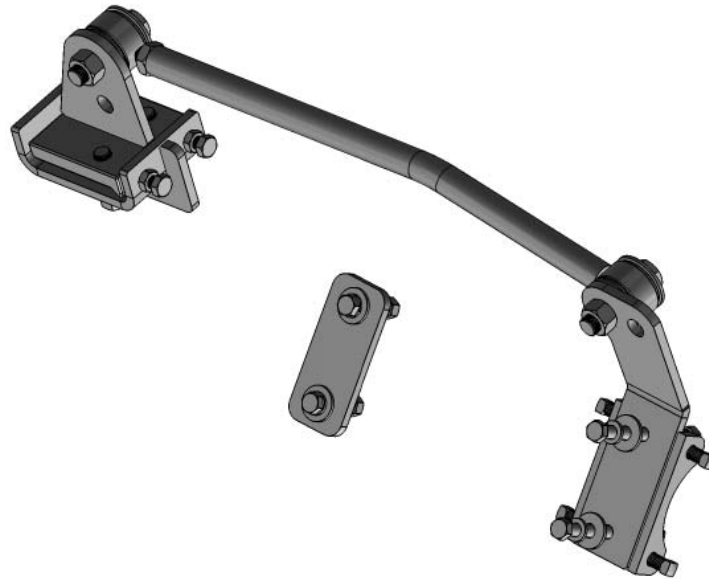




# TigerTrak

## TT2400 Instructions

Ford F-53 – 14,000, 16,000 & 18,000 GVW  
Motor Home Chassis Rear Bar



**! ATTENTION**

Use these torque specs, **UNLESS** otherwise specified.

**Tools Required**

1-1/8" Combo Wrench	1-1/8" Socket
3/4" Combo Wrench	3/4" Socket
1/2" Drive Ratchet	Torque Wrench
1/2" x 6" Extensions	1/2" Combo Wrench

**! ATTENTION**

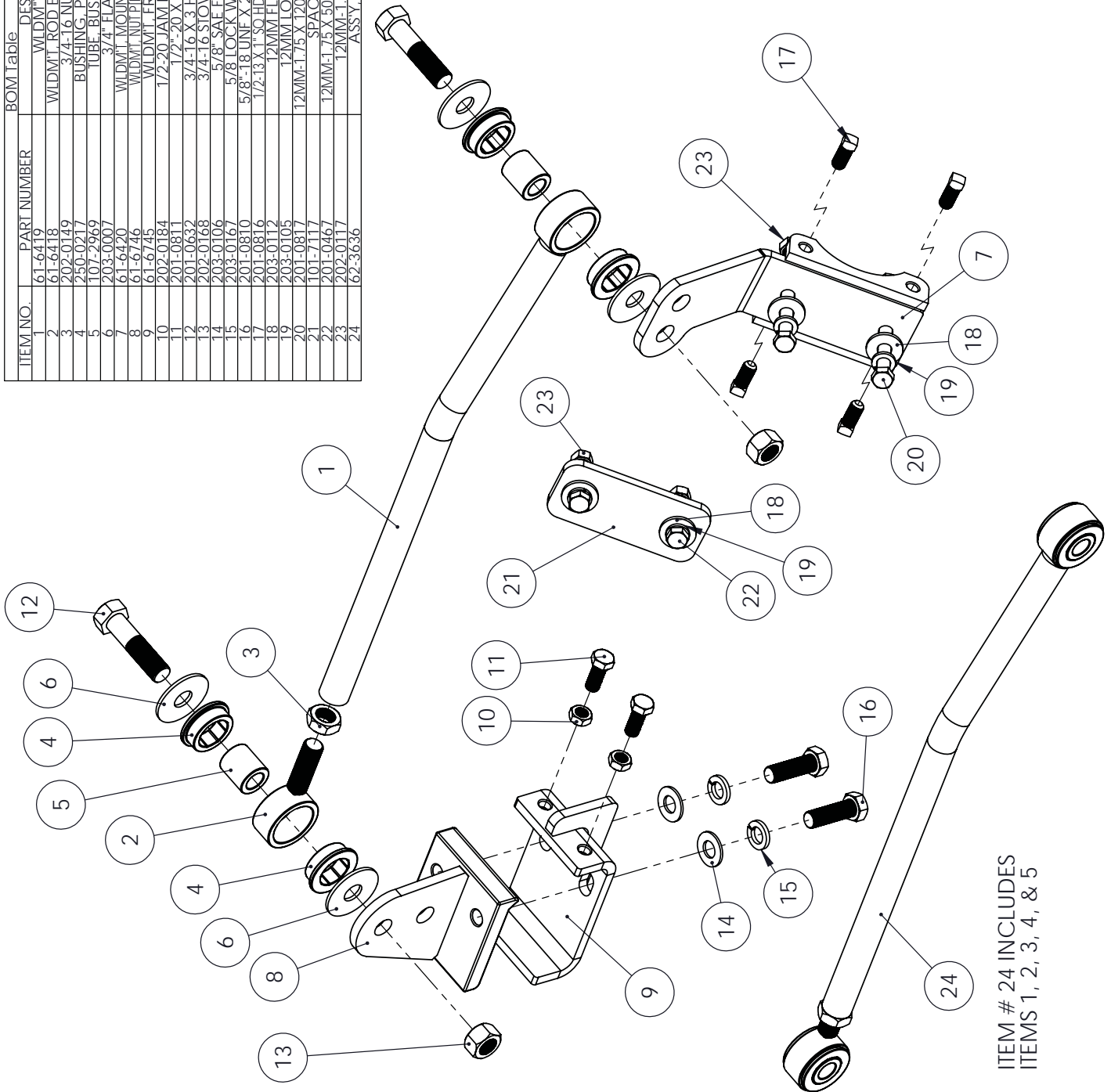
A qualified mechanic using normal automotive tools and following all safety measures known should perform installation of this product.

Torque Specs	
Bolt Description	Torque Spec.
1/2 x 4.5 U-bolt	75 ft/lbs
1/2 x 1 1/2 USS GR. 8	95 ft/lbs
1/2 x 2 USS GR. 8	95 ft/lbs
1/2 x 2 1/2 USS GR. 8	95 ft/lbs
1/2 x 3 USS GR. 8	95 ft/lbs
1/2-13 x 1 SQ. Set Screw	75 ft/lbs
1/2 x 1 1/4 SAE GR. 8	75 ft/lbs
5/8 x 2 SAE GR. 8	150 ft/lbs
5/8 x 2 3/4 SAE GR. 8	150 ft/lbs
3/4 x 3 SAE GR. 5	150 ft/lbs
3/4 x 3 1/2 SAE GR. 5	150 ft/lbs
3/4 X 5 SAE GR. 5	150 ft/lbs
12-1.75 x 55 MM HEX 10.9	65 ft/lbs
12-1.75 x 120 MM HEX 10.9	65 ft/lbs
12-1.75 MM HEX NUT 10.9	65 ft/lbs
14-2.0 x 40 MM HEX 10.9	125 ft/lbs
14-2.0 x 80 MM HEX 10.9	125 ft/lbs

# TigerTrak TT2400 Instructions

Ford F-53 – 14,000, 16,000 & 18,000 GVW  
Motor Home Chassis Rear Bar

ITEM NO.	PART NUMBER	DESCRIPTION	QTY.
1	61-6419	WLDMT ROD, TT2400	1
2	61-6418	WLDMT ROD END, RIGHT THREAD, TT	1
3	202-0149	3/4-16 NUT, HEX JAM, ZP	1
4	250-0217	BUSHING, POLYURETHANE, TT	4
5	107-2969	TUBE, BUSHING INSERT, TT	2
6	203-0007	3/4" FLAT WASHER, ZP	4
7	61-6420	WLDMT MOUNTING BRACKET, TT2400	4
8	61-6746	WLDMT NUT PLATE FRAME BRACKET, TT	1
9	61-6745	WLDMT FRAME BRACKET, TT	1
10	202-0184	1/2-20 JAM HEX NUT, GRD5, ZP	2
11	201-0811	1/2-20 X 1-1/4 GR 8 ZPC	2
12	201-0632	3/4-16 X 3 HEX BOLT, GR5, ZP	2
13	202-0168	3/4-16 STOVER LOCK NUT, ZP	2
14	203-0106	5/8" SAE FLAT WASHER, ZP	2
15	203-0167	5/8" LOCK WASHER, GRD 8, ZP	2
16	201-0810	5/8"-18 UNF X 2" GR 8 GOLD PLATE	2
17	201-0816	1/2-13 X 1-5/8 HD CP SET SCRW, GRD5, ZP	2
18	203-0112	12MM FLAT WASHER, ZP	4
19	203-0105	12MM LOCK WASHER, ZP	4
20	201-0817	12MM-1.75 X 120MM HEX BI, GD10.9, BLK	2
21	101-7117	SPACER PLATE, TT	1
22	201-0467	12MM-1.75 X 50MM HEX BOLT, GR 10.9	2
23	202-0117	12MM-1.75 HEX NUT, ZP	4
24	62-3636	ASSY, ROD, TT2400	1



ITEM # 24 INCLUDES  
ITEMS 1, 2, 3, 4, & 5

# TigerTrak

## TT2400 Instructions

Ford F-53 – 14,000, 16,000 & 18,000 GVW  
Motor Home Chassis Rear Bar

### Installation Instructions:

1. Move the coach to a level, flat surface. By driving the coach back and forth 10 feet once or twice, ensure the vehicle's front wheels are straight ahead before starting installation. Set the brake and chock wheels.

### Mounting Bracket Installation:

1. Remove and discard the four (4) bolts, 2 on each side that hold the sway bar on the differential housing.

**NOTE: DO ONE SIDE AT A TIME TO AVOID SWAY BAR FROM FALLING DOWN.**

On driver's side, insert the Mounting Bracket (#1) underneath the sway bar bracket and install bolts supplied in bolt kit. There are four holes drilled and tapped in the bracket to accept the four square head set-screws. Put a drop of Loctite on each set-screw and thread into the tapped holes. Tighten the set-screws down equally until they contact the bracket that is welded to the differential. This will stop the lateral movement of the bracket.

On the passenger side, insert Spacer Plate (#2) between sway bar brackets and differential. Install bolts supplied in kit.

### Frame Bracket Installation:

1. Note two holes in the frame on the passenger side above the differential. Use the two 1/2" x 2" bolts and the Backing Plate (#4), install on the outside of the frame. Put the T-Bracket on the inside of the frame over the bolts and assemble with NyLoc nuts.


**NOTE: THE BACKING PLATE (#4) HAS A NOTCH IN ONE CORNER. THIS NOTCH IS THERE TO CLEAR THE EXISTING BRACKET THAT IS ALREADY BOLTED TO THE FRAME. IF AIR BAGS ARE INSTALLED ON THE COACH, YOU MAY NEED**

**TO DRILL OR MODIFY THE EXISTING BRACKET BEFORE MOUNTING THE FRAME BRACKET (#3).**

### Rod Assembly Installation:

1. Install the Rod Assembly (#21) using the 3/4" bolts, flat washers and lock nuts. Be sure that there is a flat washer **on each side of the urethane bushings**. When adjusting the length of the Rod Assembly, it is necessary that the coach's full weight be on the suspension. Make sure the bend is in the center above the differential.

2. Mount bar **behind Frame Bracket (#3)** and **in front of Mounting Bracket (#1)**, adjusting to fit with coach at **NORMAL RIDE HEIGHT**. Torque all bolts to spec (See torque chart), then torque jam nut to 100-150 ft. lbs. Inspect for any wires or hoses that may rub, if so use supplied split loom to cover the wires or hoses and the supplied snap ties to secure. This completes the installation.

 **SUGGESTION**

**On earlier and lighter chassis the sway bar brackets are held on with 10MM bolts. We suggest that you remove the bolts and the nuts that are tacked on the differential and replace them with the 12MM bolts and nuts included in the kit.**

**On some models, 12mm bolts are used. If 12mm bolts are used, replace them with the bolts included in the kit, because they are longer. Tighten to spec (See torque chart).**



© 2007 Blue Ox  
One Mill Road, Industrial Park  
Pender, Nebraska 68047  
Phone: (402) 385-3051 • Fax: (402) 385-3360  
[www.blueox.us](http://www.blueox.us)