

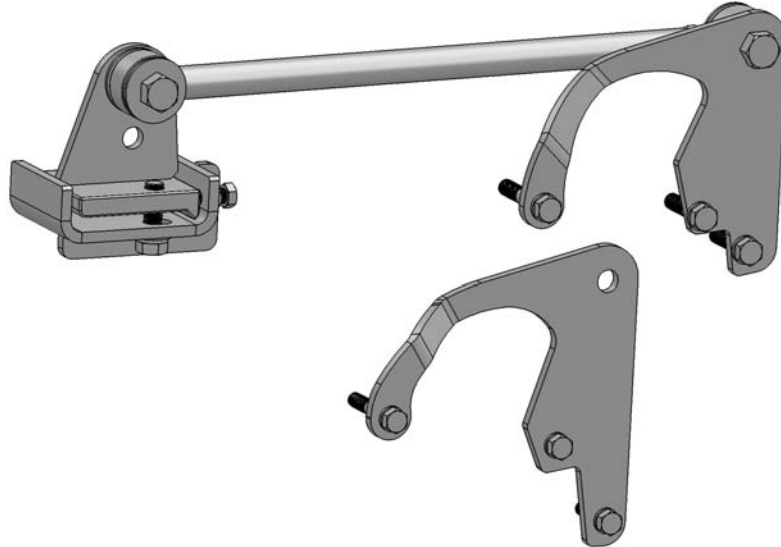


BLUE OX®

TigerTrak

TT2401 Instructions

F-53 Chassis with 20-22K GVW Rear Bar



ATTENTION

Use these torque specs, **UNLESS** otherwise specified.

Tools Required

- | | |
|---------------------|---------------|
| 1-1/8" Combo Wrench | 1-1/8" Socket |
| 3/4" Combo Wrench | 3/4" Socket |
| 1/2" Drive Ratchet | 7/8" Socket |
| 1/2" x 6" Extension | Torque Wrench |

ATTENTION

A qualified mechanic using normal automotive tools and following all safety measures known should perform installation of this product.

Torque Specs

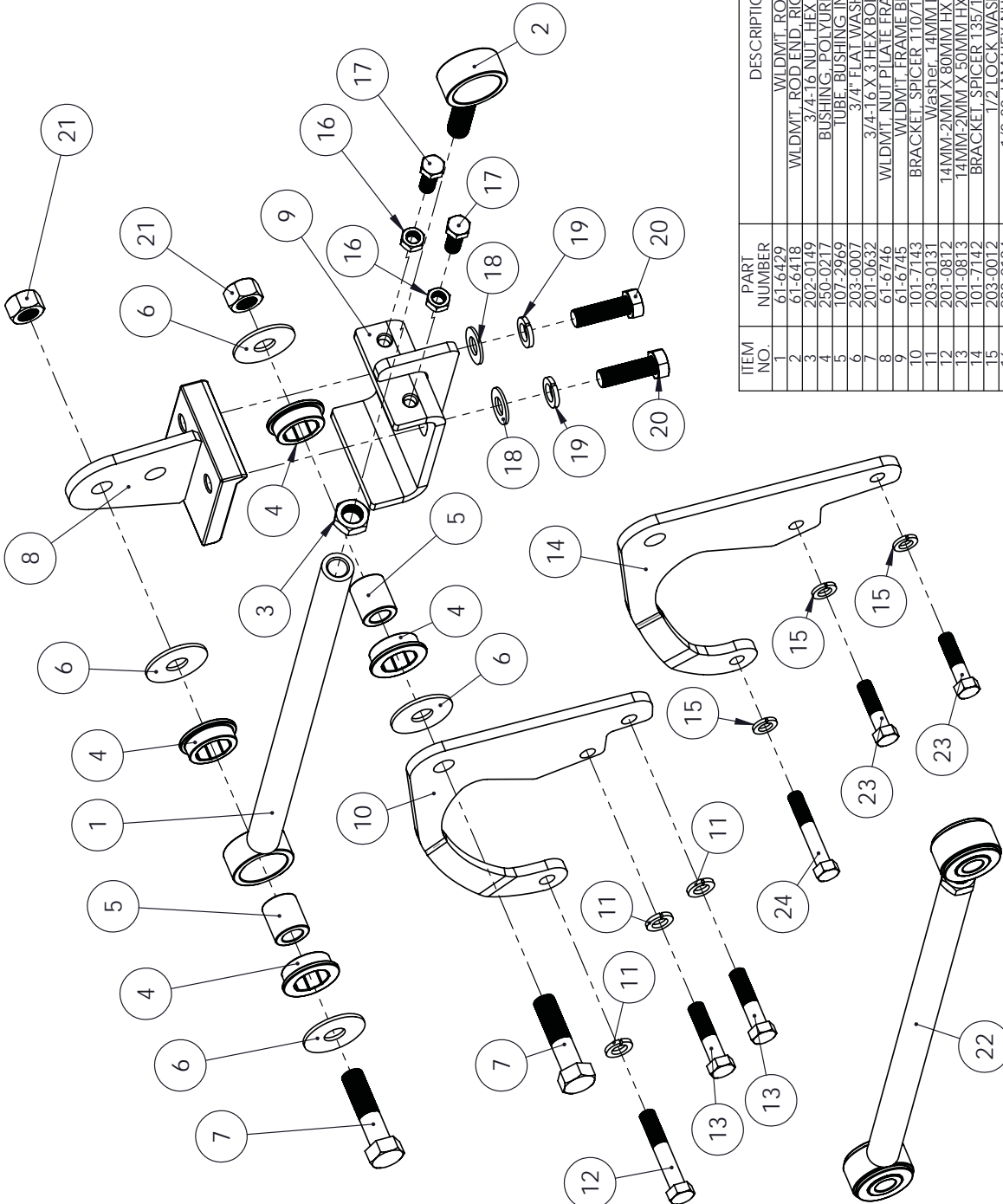
Bolt Description	Torque Spec.
1/2 x 4.5 U-bolt	75 ft/lbs
1/2 x 1 1/2 USS GR. 8	95 ft/lbs
1/2 x 2 USS GR. 8	95 ft/lbs
1/2 x 2 1/2 USS GR. 8	95 ft/lbs
1/2 x 3 USS GR. 8	95 ft/lbs
1/2-13 x 1 SQ. Set Screw	75 ft/lbs
1/2 x 1 1/4 SAE GR. 8	75 ft/lbs
5/8 x 2 SAE GR. 8	150 ft/lbs
5/8 x 2 3/4 SAE GR. 8	150 ft/lbs
3/4 x 3 SAE GR. 5	150 ft/lbs
3/4 x 3 1/2 SAE GR. 5	150 ft/lbs
3/4 X 5 SAE GR. 5	150 ft/lbs
12-1.75 x 55 MM HEX 10.9	65 ft/lbs
12-1.75 x 120 MM HEX 10.9	65 ft/lbs
12-1.75 MM HEX NUT 10.9	65 ft/lbs
14-2.0 x 40 MM HEX 10.9	125 ft/lbs
14-2.0 x 80 MM HEX 10.9	125 ft/lbs

TigerTrak

TT2401 Instructions

F-53 Chassis with 20-22K GVW Rear Bar

TT2401



ITEM NO.	PART NUMBER	DESCRIPTION	QTY.
1	61-6429	WLDMT. ROD END, RT	1
2	61-6418	WLDMT. ROD END, RIGHT THREAD, IT	1
3	202-0149	3/4-16 NUT, HEX JAM, ZP	1
4	250-0217	BUSHING, POLYURETHANE, IT	4
5	107-2969	TUBE, BUSHING, INSERT, IT	2
6	203-0007	3/4" FLAT WASHER, 7P	4
7	201-0632	3/4-16 X 3 HEX BOLT, GR5, 7P	2
8	61-6746	WLDMT. NUT, PILATE FRAME BRACKET, IT	1
9	61-6745	WLDMT. FRAME BRACKET, IT	1
10	101-7143	Bracket, Spicer T10/T15 REAR END, IT	1
11	203-0131	Washer, 14MM Lock, 7P	3
12	201-0812	14MM-2MM X 80MM HX BT, GD 10.9, BLK	2
13	201-0813	14MM-2MM X 50MM HX BT, GD10.9 BLK	2
14	101-7142	BRACKET, SPICER 135/150 REAR END, IT	1
15	203-0012	1/2 LOCK WASHER, 7P	3
16	202-0184	1/2-20 JAM HEX NUT, GRD5, 7P	2
17	201-0811	1/2"-20 X 1-1/4 GR 8.7BC	2
18	203-0106	5/8" SAF FLAT WASHER, 7P	2
19	203-0167	5/8 LOCK WASHER, GRD 8.7P	2
20	201-0810	5/8"-18 UNF X 2", GR 8 GOLD PLATE	2
21	202-0168	3/4-16 STOVER LOCK NUT, 7P	2
22	62-3633	ASSY. ROD, IT	1
23	201-0621	1/2-13 X 2 HEX BOLT, GRD 8.7P	2
24	201-0562	1/2-13 X 3 HEX BOLT, GRD 8.7P	1

NOTE: ITEM # 22 INCLUDES
ITEM #S: 1, 2, 3, 4, & 5

TigerTrak

TT2401 Instructions

F-53 Chassis with 20-22K GVW Rear Bar

Installation Instructions:

1. Move the coach to a level, flat surface. By driving the coach back and forth 10 feet once or twice, ensure the vehicle's front wheels are straight ahead before starting installation. Set the brake and chock wheels.

1. Differential Bracket Installation:

1. Hold the Differential Bracket (#1 or #2) up to the differential to locate 3 OEM bolts. Remove the bolts and discard.

2. Install the differential bracket to the differential with the supplied bolts and lock washer. Be sure to use Loctite on the bolts before installing. If flat washers are used on OEM bolts reuse the flat washers between the bracket and the differential casting. Torque to spec. (See chart).

2. Frame Bracket Installation:

1. Note two holes in the frame on the passenger side above the differential.

NOTE: THE BACKING PLATE (#4) HAS A NOTCH IN ONE CORNER. THIS NOTCH IS THERE TO CLEAR THE EXISTING BRACKET ALREADY BOLTED TO THE FRAME.

2. Insert two 1/2" x 2" bolts into the Backing Plate (#4) and install on the outside of the frame. Now install the Frame Bracket (#3) on the inside of the frame over the bolts and assemble with lock nuts. Torque to spec (See chart).

3. Rod Assembly Installation:

1. Install Rod Assembly (#20) using 3/4" bolts, flat washers and lock nuts. Be sure that there is a flat washer on each side of the urethane bushings. When adjusting the length of the Rod Assembly, it is necessary that the coach's full weight be on the suspension.

NOTE: ROD ASSEMBLY SHOULD BE INSTALLED WITH THE ROD TO THE REAR OF THE BRACKETS.

2. Be sure to check all fasteners for tightness and proper torque, including the jam nut, which must be 100-150 ft. lbs on the Rod Assembly. Inspect for any wires or hoses that may rub, if so use supplied split loom to cover the wires or hoses and the supplied snap ties to secure. This completes the installation.



© 2007, 10 Blue Ox
One Mill Road, Industrial Park
Pender, Nebraska 68047

Phone: (402) 385-3051 • Fax: (402) 385-3360
www.blueox.com

! IMPORTANT

There are two (2) Differential Brackets (#1 and #2) in the kit. One fits the Spicer metric rear (110-115) and one fits the larger rear (135-150). Match the bracket to the bolt pattern and discard the one that does not fit.

! IMPORTANT

Some OEM bolts may be metric. Check the size closely before installation. Metric bolts are larger and provided.

