



TigerTrak

TT2402 Instructions

E350 & E450 C-Chassis thru 2004
Rear Bar



ATTENTION

Use these torque specs, **UNLESS** otherwise specified.

Torque Specs	
Bolt Description	Torque Spec.
1/2 x 4.5 U-bolt	75 ft/lbs
1/2 x 1 1/2 USS GR. 8	95 ft/lbs
1/2 x 2 USS GR. 8	95 ft/lbs
1/2 x 2 1/2 USS GR. 8	95 ft/lbs
1/2 x 3 USS GR. 8	95 ft/lbs
1/2-13 x 1 SQ. Set Screw	75 ft/lbs
1/2 x 1 1/4 SAE GR. 8	75 ft/lbs
5/8 x 2 SAE GR. 8	150 ft/lbs
5/8 x 2 3/4 SAE GR. 8	150 ft/lbs
3/4 x 3 SAE GR. 5	150 ft/lbs
3/4 x 3 1/2 SAE GR. 5	150 ft/lbs
3/4 X 5 SAE GR. 5	150 ft/lbs
12-1.75 x 55 MM HEX 10.9	65 ft/lbs
12-1.75 x 120 MM HEX 10.9	65 ft/lbs
12-1.75 MM HEX NUT 10.9	65 ft/lbs
14-2.0 x 40 MM HEX 10.9	125 ft/lbs
14-2.0 x 80 MM HEX 10.9	125 ft/lbs

Tools Required

1-1/8" Combo Wrench	1-1/18" Socket
3/4" Combo Wrench	3/4" Socket
1/2" Drive Ratchet	15/16" Socket
1/2" x 6" Drive Extension	Torque Wrench

TigerTrak

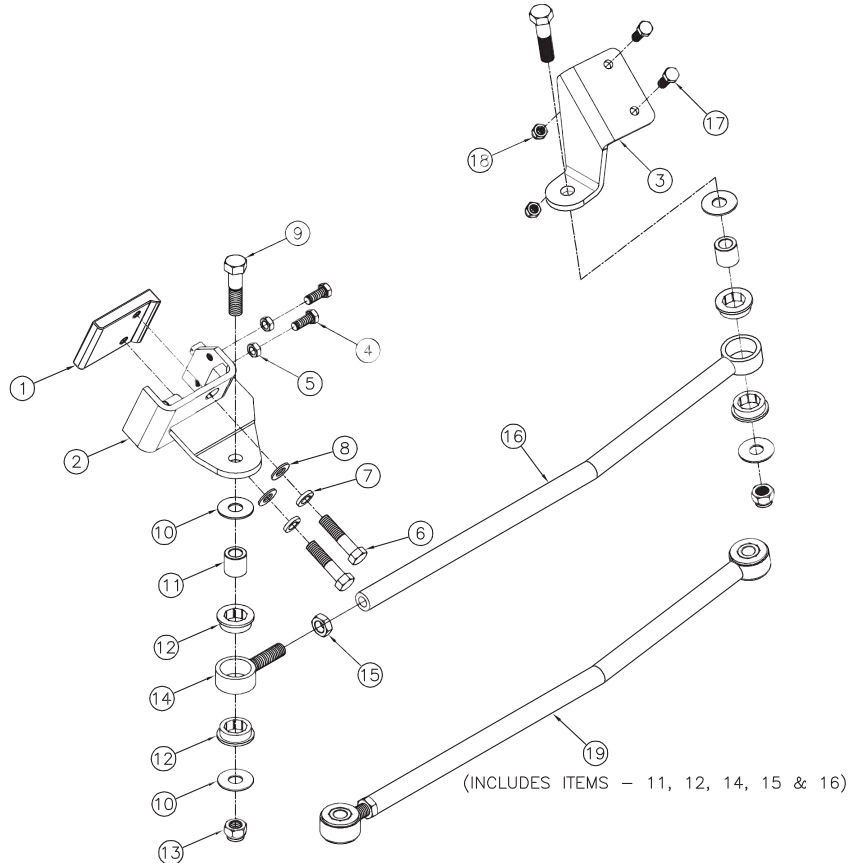
TT2402 Instructions

E350 & E450 C-Chassis thru 2004

Rear Bar

Parts List

Ref. No.	Qty.	Part #	Description
1	1	229-0734	FRAME BRKT, NUT PLATE, TT2300
2	1	61-6439	WLDM'T, FRAME BRACKET, TT
3	1	101-7145	BRACKET, AXLE, TT2402
4	2	201-0811	1/2-20 X 1 1/4" HEX BOLT, GRD.8, ZP
5	2	202-0184	1/2-20 JAM HEX NUT, GRD. 5, ZP
6	2	201-0814	5/8-18 X 2 3/4"HEX BOLT, GRD. 8, ZP
7	2	203-0167	5/8" LOCK WASHER, GRD 8, ZP
8	2	203-0106	5/8 SAE FLAT WASHER, ZP
9	2	201-0632	3/4-16 X 3 HEX BOLT GR 5 ZP
10	4	203-0007	3/4 FLAT WASHER, ZP
11	2	107-2969	TUBE, BUSHING INSERT, TT
12	4	250-0217	BUSHING, URETHANE, TT
13	2	202-0168	3/4-16 STOVER LOCK NUT ZP
14	1	61-6418	WLDM'T, ROD END, RIGHT THREAD, TT
15	1	202-0149	3/4-16 NUT, HEX JAM, ZP
16	1	61-6438	WLDM'T, ROD, TT2402
17	2	201-0568	1/2-13 X 1 1/2 HEX HD BOLT GD 8 ZP
18	2	202-0185	1/2-13 HEX NUT, NYL INS. LK.GD 8,ZP
19	1	62-3634	ASS'Y, ROD, TT2402
	2	290-0275	8" LONG CABLE TIE, BLK
	1	190-0155	LOOM, FLEX GUARD, .413 I.D. (BULK)
	1	XA1-0049	LOCTITE RED, 262, TUBE, .02 FL. OZ.



TigerTrak

TT2402 Instructions

E350 & E450 C-Chassis thru 2004
Rear Bar



ATTENTION

A qualified mechanic using normal automotive tools and following all safety measures known should perform installation of this product.

Installation Instructions:

1. Move the coach to a level, flat surface. By driving the coach back and forth 10 feet once or twice, ensure the vehicle's front wheels are straight ahead before starting installation. Set the brake and chock wheels.

1. Axle Bracket Installation:

1. Remove the right rear shock absorber. Set it aside with its hardware. Assemble the Axle Bracket (#3) to the shock mount with two (2) 1/2" bolts and two Nyloc nuts. Tighten securely. Reinstall the shock absorber. NOTE: Upper bolt may be reversed to enable assembly. Be sure to use loctite on the bolts.

2. Frame Bracket Installation:

1. Install the Frame Bracket (#2) and Nut Plate (#1) to the left side frame rail. The Frame Bracket (#2) is designed to mount to the bottom and side of the frame rail. Position the bracket directly next to the rear frame cross-member (place Nut Plate (#1) with lip facing down and towards center of vehicle). Make sure not to contact any wires, brake lines, etc. Install bolts through the bottom of Frame Bracket (#2) and tighten "just snug" for now. Then, install jam nuts to 1/2" bolts and install on the Frame Bracket (#2). Now, alternately tighten the 5/8" and 1/2" bolts on the Frame Bracket (#2) and torque to spec (See chart). Tighten jam nuts.

3. Rod Assembly Installation:

1. Position the Rod Assembly (#19) to the rear of the Axle Bracket (#3) and Frame Bracket (#2). Install the rod assembly using the 3/4" bolts, flat washers and lock nuts. Be sure that there is a flat washer on each side of the urethane bushings. When adjusting the length of the Rod Assembly (#19), it is necessary that the coach's full weight be on the suspension. Adjust to fit with the coach at NORMAL RIDE HEIGHT. Torque all bolts to spec (See chart). Torque jam nut to 100-150 ft. lbs. Inspect for any wires or hoses that may rub, if so use supplied split loom to cover the wires or hoses and the supplied snap ties to secure. This completes the installation.



© 2007 Blue Ox
One Mill Road, Industrial Park
Pender, Nebraska 68047
Phone: (402) 385-3051 • Fax: (402) 385-3360
www.blueox.us