

TigerTrak

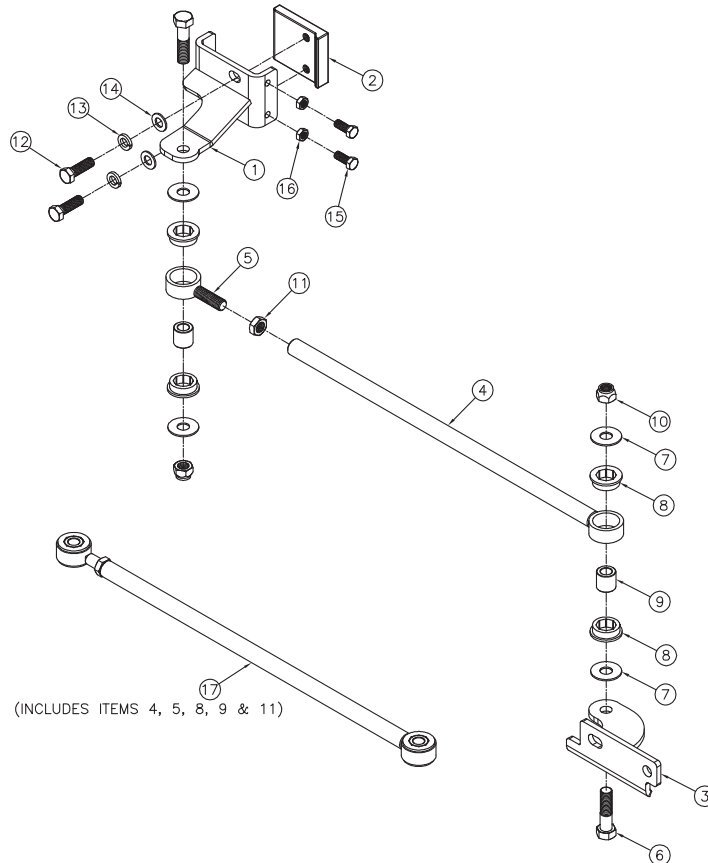
TT2403 Instructions

Ford F-53 V10 Engine

Motor Home Chassis Front Bar

Parts List

Ref. No.	Qty.	Part #	Description
1	1	61-6461	WLDM'T, FRAME BRACKET, TT2403
2	1	229-0734	FRAME BRKT, NUT PLATE, TT2300
3	1	101-7157	PLATE, AXLE BRACKET, TT2403
4	1	61-6460	WLDM'T, ROD, TT2403
5	1	61-6418	WLDM'T, ROD END, RIGHT THREAD, TT
6	2	201-0632	3/4-16 X 3 HEX BOLT GR 5 ZP
7	4	203-0007	3/4 FLAT WASHER, ZP
8	4	250-0217	BUSHING, URETHANE, TT
9	2	107-2969	TUBE, BUSHING INSERT, TT
10	2	202-0168	3/4-16 STOVER LOCK NUT ZP
11	1	202-0149	3/4-16 NUT, HEX JAM, ZP
12	2	201-0810	5/8-18 X 2 HEX BOLT, GRD.8, ZP
13	2	203-0167	5/8" LOCK WASHER, GRD 8, ZP
14	2	203-0106	5/8 SAE FLAT WASHER, ZP
15	2	201-0811	1/2-20 X 1 1/4" HEX BOLT, GRD.8, ZP
16	2	202-0184	1/2-20 JAM HEX NUT, GRD. 5, ZP
17	1	62-3637	ASS'Y, ROD, TT2403
	2	290-0275	8" LONG CABLE TIE, BLK (NOT SHOWN)
	1	190-0155	LOOM, FLEX GUARD, .412 I.D. (BULK) (NOT SHOWN)
	1	XA1-0049	LOCTITE RED, 262, TUBE, .02 FL. OZ. (NOT SHOWN)



TigerTrak

TT2403 Instructions

Ford F-53 V10 Engine
Motor Home Chassis Front Bar

Installation Instructions:

1. Move the coach to a level, flat surface. By driving the coach back and forth 10 feet once or twice, ensure the vehicle's front wheels are straight ahead before starting installation. Set the brake and chock wheels.



2. Begin by removing the nuts on the U-bolt on the rear side of the front axle on the driver side. Place the Axle Bracket (#3) on the U-bolt and replace the nuts (See photo 2). Torque to spec (See chart). Be sure to use Loctite on the bolts.



3. Place the Frame Bracket (#1) on the outside of the passenger side frame rail in rear of the front axle, and loosely secure it with the Nut Plate (#2) with the supplied 5/8" x 2" bolts. Install the two 1/2" x 1-1/4" bolts with jam nuts. Alternate tightening the 5/8" bolts and 1/2" bolts on the Frame Bracket. The Nut Plate (#2) must be pressed against the frame using 1/2" bolts, while at the same time, the 5/8" bolts sandwich the Frame Bracket and the Nut Plate. See torque chart for all tightening specs (See photo 3).



4. With the coach at normal ride height, install the adjustable end of the Rod Assembly (#17) to the Axle Bracket (#3). Use one of the supplied 3/4" x 3" bolts, two washers, and nut. Assemble loosely. Adjust the length of the rod until you are able to assemble the supplied 3/4" x 3" bolt, two washers, and nut in the Frame Bracket (#1). Be sure that there is a flat washer on each side of the urethane bushings.

5. Tighten the 3/4" bolt and nut on the axle bracket to spec (See torque chart). Tighten 3/4" bolt and nut on the Frame Bracket (#1) to spec. Tighten the jam nut (100-150 ft. lbs.) on the Rod Assembly (#17). This completes the installation.



© 2007 Blue Ox
One Mill Road, Industrial Park
Pender, Nebraska 68047
Phone: (402) 385-3051 • Fax: (402) 385-3360
www.blueox.us