



TigerTrak

TT2450 Instructions

E-450 Ford Chassis C-Class
Motor Home, 2005 & Newer Rear Bar



! ATTENTION

Use these torque specs, **UNLESS** otherwise specified.

Torque Specs	
Bolt Description	Torque Spec.
1/2 x 4.5 U-bolt	75 ft/lbs
1/2 x 1 1/2 USS GR. 8	95 ft/lbs
1/2 x 2 USS GR. 8	95 ft/lbs
1/2 x 2 1/2 USS GR. 8	95 ft/lbs
1/2 x 3 USS GR. 8	95 ft/lbs
1/2-13 x 1 SQ. Set Screw	75 ft/lbs
1/2 x 1 1/4 SAE GR. 8	75 ft/lbs
5/8 x 2 SAE GR. 8	150 ft/lbs
5/8 x 2 3/4 SAE GR. 8	150 ft/lbs
3/4 x 3 SAE GR. 5	150 ft/lbs
3/4 x 3 1/2 SAE GR. 5	150 ft/lbs
3/4 X 5 SAE GR. 5	150 ft/lbs
12-1.75 x 55 MM HEX 10.9	65 ft/lbs
12-1.75 x 120 MM HEX 10.9	65 ft/lbs
12-1.75 MM HEX NUT 10.9	65 ft/lbs
14-2.0 x 40 MM HEX 10.9	125 ft/lbs
14-2.0 x 80 MM HEX 10.9	125 ft/lbs

Tools Required

1-1/8" Combo Wrench	1-1/8" Socket
3/4" Combo Wrench	3/4" Socket
1/2" Drive Ratchet	15/16" Socket
1/2" x 6" Extension	Torque Wrench
1/2" Combo Wrench	

! ATTENTION

A qualified mechanic using normal automotive tools and following all safety measures known should perform installation of this product.

TigerTrak

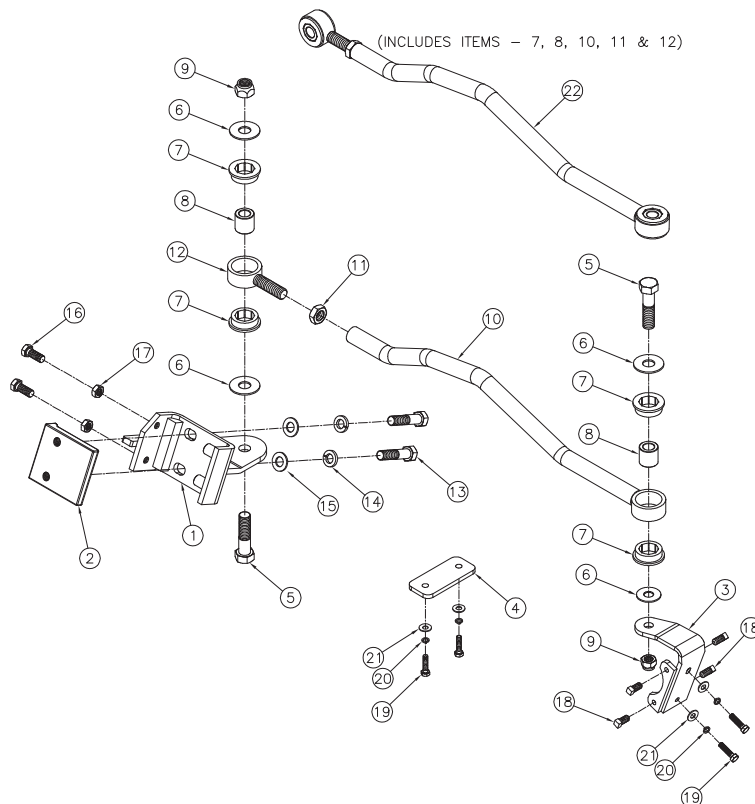
TT2450 Instructions

E-450 Ford Chassis C-Class

Motor Home, 2005 & Newer Rear Bar

Parts List

Ref. No.	Qty.	Part #	Description
1	1	61-6439	WLDM'T, FRAME BRACKET, TT
2	1	229-0734	FRAME BRKT, NUT PLATE, TT2300
3	1	61-6446	WLDM'T, AXLE BRACKET, TT2450
4	1	101-7117	SPACER PLATE, TT
5	2	201-0632	3/4-16 X 3 HEX BOLT GR 5 ZP
6	4	203-0007	3/4 FLAT WASHER, ZP
7	4	250-0217	BUSHING, URETHANE, TT
8	2	107-2969	TUBE, BUSHING INSERT, TT
9	2	202-0168	3/4-16 STOVER LOCK NUT ZP
10	1	61-6445	WLDM'T, ROD, TT2450
11	1	202-0149	3/4-16 NUT, HEX JAM, ZP
12	1	61-6418	WLDM'T, ROD END, RIGHT THREAD, TT
13	2	201-0814	5/8-18 X 2 3/4" HEX BOLT, GRD. 8, ZP
14	2	203-0167	5/8" LOCK WASHER, GRD 8, ZP
15	2	203-0106	5/8 SAE FLAT WASHER, ZP
16	2	201-0811	1/2-20 X 1 1/4" HEX BOLT, GRD.8, ZP
17	2	202-0184	1/2-20 JAM HEX NUT, GRD. 5, ZP
18	4	201-0816	1/2-13 X 1" SQ HD CP SET SCRW,GD5,ZP
19	4	201-0815	10MM-1.5MMX 40MM HX BLT GD10.9BLK.O
20	4	203-0104	10MM LOCK WASHER, ZP.
21	4	203-0103	10MM FLAT WASHER, ZP.
22	1	62-3627	ASS'Y, ROD, TT2450
	2	290-0275	8" LONG CABLE TIE, BLK
	1	190-0155	LOOM, FLEX GUARD, .413 I.D. (BULK)
	1	XA1-0049	LOCTITE RED, 262, TUBE, .02 FL. OZ.



TigerTrak

TT2450 Instructions

E-450 Ford Chassis C-Class
Motor Home, 2005 & Newer Rear Bar

Installation Instructions:

1. Move the coach to a level, flat surface. By driving the coach back and forth 10 feet once or twice, ensure the vehicle's front wheels are straight ahead before starting installation. Set the brake and chock wheels.
2. Begin by removing the 4 bolts, 2 on each side that hold the sway bar on the differential housing. Do **ONE SIDE** at a time so sway bar does not fall down.
3. On the passenger's side insert the Axle Bracket (#3) underneath the sway bar bracket and install the bolts on the bottom first. There are four holes drilled and tapped in the side of the bracket to accept the four square head set-screws. Put a drop of Loctite on each set-screw and thread into the tapped holes using a 1/2" wrench. Tighten the set-screws down equally until they contact the bracket that is welded to the differential. This will stop the lateral movement of the bracket.
4. On the driver's side insert the Spacer Plate (#4) between the sway bar brackets and the differential. Install the 10MM-1.5MM x 40MM hex bolts.
5. Position the Rod Assembly (#22) to the rear of the Axle Bracket (#3) and Frame Bracket (#1). Install the Rod Assembly (#22) using the 3/4" bolts, flat washers and lock nuts. Be sure that there is a flat washer on each side of the urethane bushings. Install the Frame Bracket (#1) and Nut Plate (#2) to the frame rail. The frame rail must be between the Nut Plate (#2) and the Frame Bracket (#1). The Frame Bracket (#1) is designed to mount to the bottom and sides of the frame rail. Position the bracket directly next to the rear frame cross-member (place Nut Plate (#2) with lip facing down and towards the center of the vehicle). Make sure not to contact any wires, brake lines, etc. Install bolts with Loctite through the bottom of the Frame Bracket (#1) and into the Nut Plate (#2) (just hand tight for now, use 15/16" socket when tightening). Then install bolts and nuts (#16 and #17) into the end of the Frame Bracket (#1) with 3/4" socket and wrench. Alternately tighten the 5/8" bolts and the 1/2" bolts on the Frame Bracket (#1) and torque to spec (See Chart). Then, tighten jam nuts.



TigerTrak

TT2450 Instructions

E-450 Ford Chassis C-Class
Motor Home, 2005 & Newer Rear Bar



6. When adjusting the length of the Rod Assembly (#22), it is necessary that the coach's full weight be on the suspension. Adjust to fit with the coach at normal ride height. Torque all bolts to specs with 1-1/8" socket and wrench (See torque chart). Finally, torque jam nut to 100-150 ft. lbs. Inspect for any wires or hoses that may rub, if so use supplied split loom to cover the wires or hoses and the supplied snap ties to secure.



© 2007 Blue Ox
One Mill Road, Industrial Park
Pender, Nebraska 68047
Phone: (402) 385-3051 • Fax: (402) 385-3360
www.blueox.us