



TigerTrak

TT2500 Instructions

Kodiak 4500-5500 Motor Home Chassis
Rear Bar



ATTENTION

Use these torque specs, **UNLESS** otherwise specified.

Torque Specs	
Bolt Description	Torque Spec.
1/2 x 4.5 U-bolt	75 ft/lbs
1/2 x 1 1/2 USS GR. 8	95 ft/lbs
1/2 x 2 USS GR. 8	95 ft/lbs
1/2 x 2 1/2 USS GR. 8	95 ft/lbs
1/2 x 3 USS GR. 8	95 ft/lbs
1/2-13 x 1 SQ. Set Screw	75 ft/lbs
1/2 x 1 1/4 SAE GR. 8	75 ft/lbs
5/8 x 2 SAE GR. 8	150 ft/lbs
5/8 x 2 3/4 SAE GR. 8	150 ft/lbs
3/4 x 3 SAE GR. 5	150 ft/lbs
3/4 x 3 1/2 SAE GR. 5	150 ft/lbs
3/4 X 5 SAE GR. 5	150 ft/lbs
12-1.75 x 55 MM HEX 10.9	65 ft/lbs
12-1.75 x 120 MM HEX 10.9	65 ft/lbs
12-1.75 MM HEX NUT 10.9	65 ft/lbs
14-2.0 x 40 MM HEX 10.9	125 ft/lbs
14-2.0 x 80 MM HEX 10.9	125 ft/lbs

Tools Required

1-1/8" Combo Wrench	1-1/8" Socket
3/4" Combo Wrench	3/4" Socket
1/2" Drive Ratchet	22MM Socket
1/2" x 6" Extension	Torque Wrench

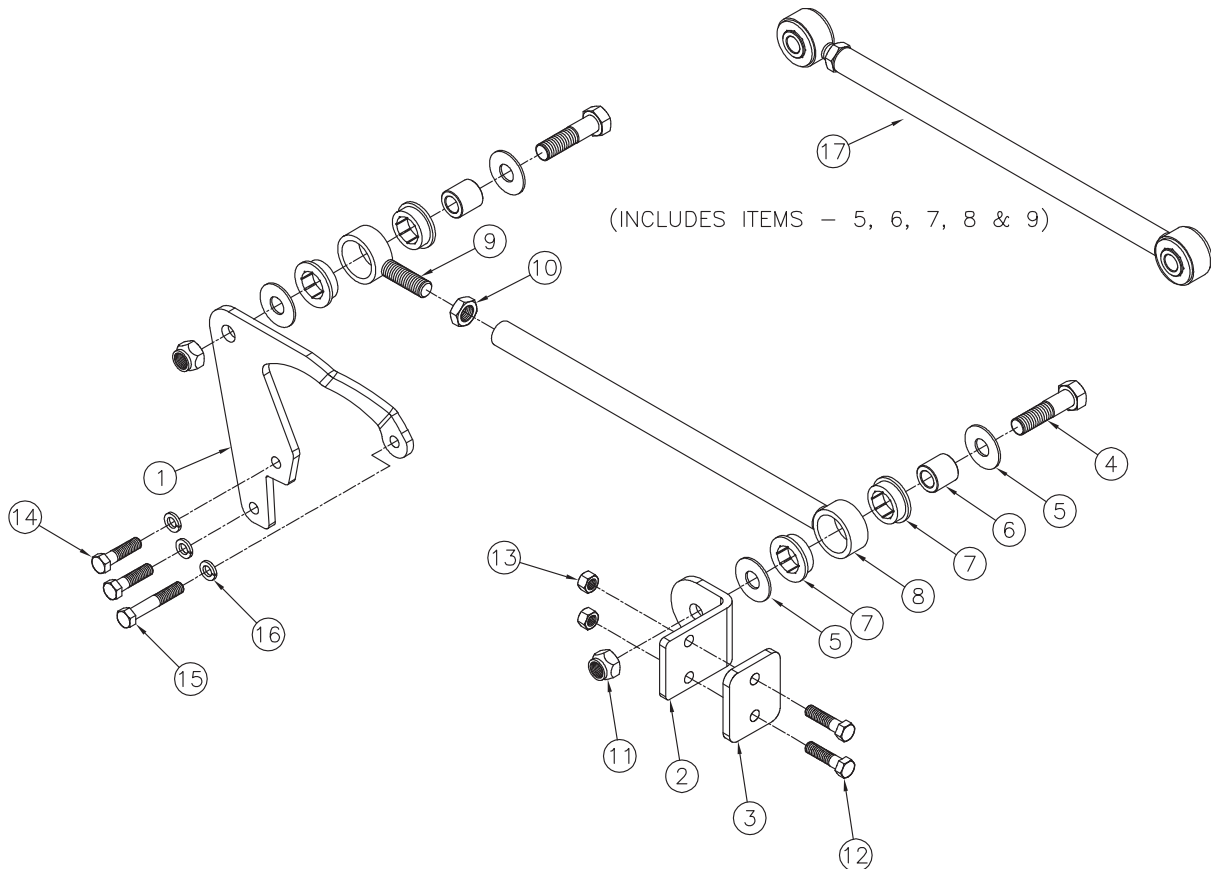
TigerTrak TT2500 Instructions

Kodiak 4500-5500

Motor Home Chassis Rear Bar

Parts List

Ref. No.	Qty.	Part #	Description
1	1	101-7143	BRACKET, SPICER110/115 REAR END, TT
2	1	101-7173	FRAME, BRACKET, TT2500
3	1	102-6856	BACKING PLATE, TT2500
4	2	201-0632	3/4-16 X 3 HEX BOLT GR 5 ZP
5	4	203-0007	3/4 FLAT WASHER, ZP
6	2	107-2969	TUBE, BUSHING INSERT, TT
7	4	250-0217	BUSHING, URETHANE, TT
8	1	61-6429	WLDM'T, ROD, TT
9	1	61-6418	WLDM'T, ROD END, RIGHT THREAD, TT
10	1	202-0149	3/4-16 NUT, HEX JAM, ZP
11	2	202-0168	3/4-16 STOVER LOCK NUT ZP
12	2	201-0621	1/2-13 X 2 HEX BOLT GRD.8, ZP
13	2	202-0185	1/2-13 HEX NUT, NYL INS. LK.GD 8,ZP
14	2	201-0813	14MM-2MM X 50MM HX BT,GD 10.9, BLK
15	1	201-0812	14MM-2MM X 80MM HX BT, GD 10.9, BLK
16	3	203-0131	WASHER, 14MM LOCK, ZP
17	1	62-3633	ROD ASS'Y, TT2500
	2	290-0275	8" LONG CABLE TIE, BLK (NOT SHOWN)
	1	190-0155	LOOM, FLEX GUARD, .413 I.D. (BULK) (NOT SHOWN)
	1	XA1-0049	LOCTITE RED, 262, TUBE, .02 FL. OZ. (NOT SHOWN)



TigerTrak

TT2500 Instructions

Kodiak 4500-5500
Motor Home Chassis Rear Bar



ATTENTION

A qualified mechanic using normal automotive tools and following all safety measures known should perform installation of this product.



Installation Instructions:

1. Move the coach to a level, flat surface. By driving the coach back and forth 10 feet once or twice, ensure the vehicle's front wheels are straight ahead before starting installation. Set the brake and chock the wheels.
2. Begin by removing the three bolts from the differential. Bolt Axle Bracket (#1) on using the supplied 14 mm bolts. (See photo). If flat washers are used on OEM bolts reuse the flat washers between the bracket and the differential casting. Torque to spec, (See torque chart). Use Loctite on threads.
3. Note two holes in the frame on the passenger side above the differential. Use the two 1/2" x 2" bolts and the Backing Plate (#3) install on the outside of the frame. Put the L-Bracket on the inside of the frame over the bolts and assemble with Nyloc nuts. (See

photo).

4. With the coach at normal ride height, install the adjustable end of the Rod Assembly (#17) to the Axle Bracket (#1). Be sure that there is a flat washer on each side of the urethane bushings. Use one of the supplied 3/4" x 3" bolts, two washers, and nut. Assemble loosely. Adjust the length of the rod until you are able to assemble the supplied 3/4" x 3" bolt, two washers, and nut in the Frame Bracket (#2).
5. Tighten the 3/4" bolt and nut on the Axle Bracket (#1) to spec (See torque chart). Tighten 3/4" bolt and nut on the Frame Bracket (#2) to spec. Lastly, tighten the jam nut in the Rod Assembly (#17). **See torque chart for all tightening specs. Inspect for any wires or hoses that may rub, if so use supplied split loom to cover the wires or hoses and**



BLUE OX®

© 2007 Blue Ox
One Mill Road, Industrial Park
Pender, Nebraska 68047
Phone: (402) 385-3051 • Fax: (402) 385-3360
www.blueox.us