



TigerTrak

TT2501 Instructions

Kodiak 4500-5500
Motor Home Chassis Front Bar



Torque Specs

Bolt Description	Torque Spec.
1/2 x 4.5 U-bolt	75 ft/lbs
1/2 x 1 1/2 USS GR. 8	95 ft/lbs
1/2 x 2 USS GR. 8	95 ft/lbs
1/2 x 2 1/2 USS GR. 8	95 ft/lbs
1/2 x 3 USS GR. 8	95 ft/lbs
1/2-13 x 1 SQ. Set Screw	75 ft/lbs
1/2 x 1 1/4 SAE GR. 8	75 ft/lbs
5/8 x 2 SAE GR. 8	150 ft/lbs
5/8 x 2 3/4 SAE GR. 8	150 ft/lbs
3/4 x 3 SAE GR. 5	150 ft/lbs
3/4 x 3 1/2 SAE GR. 5	150 ft/lbs
3/4 X 5 SAE GR. 5	150 ft/lbs
12-1.75 x 55 MM HEX 10.9	65 ft/lbs
12-1.75 x 120 MM HEX 10.9	65 ft/lbs
12-1.75 MM HEX NUT 10.9	65 ft/lbs
14-2.0 x 40 MM HEX 10.9	125 ft/lbs
14-2.0 x 80 MM HEX 10.9	125 ft/lbs

! ATTENTION

Use these torque specs, **UNLESS** otherwise specified.

Tools Required

1-1/8" Combo Wrench	1-1/8" Socket
3/4" Combo Wrench	3/4" Socket
1/2" Drive Ratchet	7/8" Socket
1/2" x 6" Extension	Torque Wrench
	1 3/16" Socket

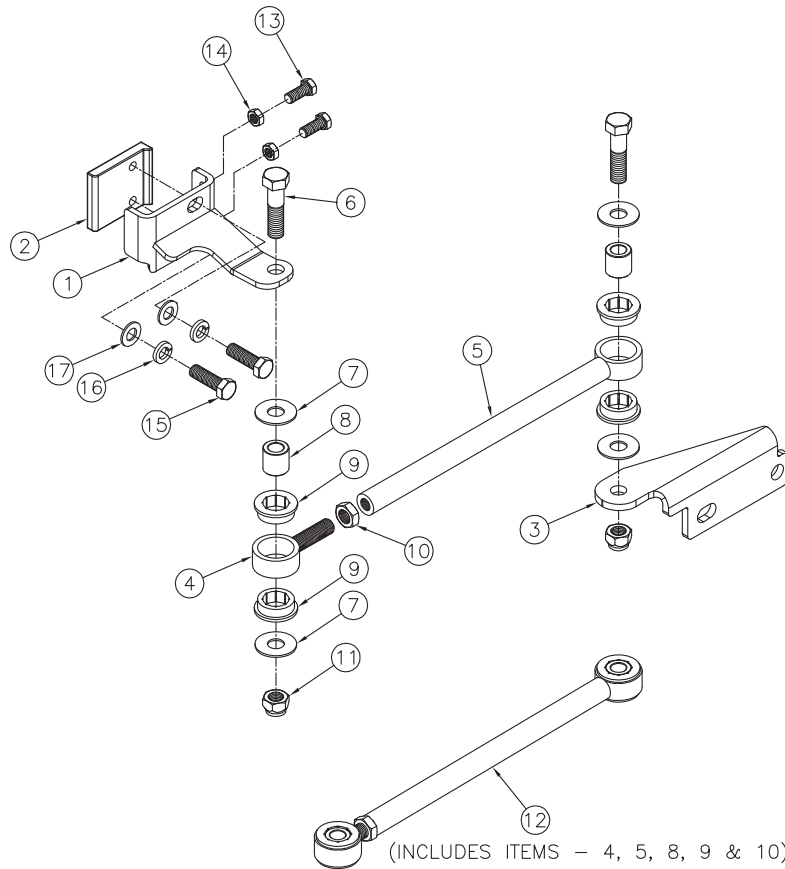
TigerTrak

TT2501 Instructions

Kodiak 4500-5500
Motor Home Chassis Front Bar

Parts List

Ref. No.	Qty.	Part #	Description
1	1	61-6461	WLDM'T, FRAME BRACKET, TT2403
2	1	229-0736	FRAME BRKT, NUT PLATE, TT2501
3	1	101-7150	BRACKET, AXLE, TT2501
4	1	61-6418	WLDM'T, ROD END, RIGHT THREAD, TT
5	1	61-6444	WLDM'T, ROD, TT2501
6	2	201-0632	3/4-16 X 3 HEX BOLT GR 5 ZP
7	4	203-0007	3/4 FLAT WASHER, ZP
8	2	107-2969	TUBE, BUSHING INSERT, TT
9	4	250-0217	BUSHING, URETHANE, TT
10	1	202-0149	3/4-16 NUT, HEX JAM, ZP
11	2	202-0168	3/4-16 STOVER LOCK NUT ZP
12	1	62-3633	ROD, ASS'Y, TT2306,TT2401,TT2500&01
13	2	201-0101	1/2-20 X 1" HEX BOLT, GRD.5, ZP
14	2	202-0184	1/2-20 JAM HEX NUT, GRD. 5, ZP
15	2	201-0810	5/8-18 X 2 HEX BOLT, GRD.8, ZP
16	2	203-0167	5/8" LOCK WASHER, GRD 8, ZP
17	2	203-0106	5/8 SAE FLAT WASHER, ZP
	1	XA1-0049	LOCTITE RED, 262, TUBE, .02 FL. OZ.



TigerTrak TT2501 Instructions

Kodiak 4500-5500

Motor Home Chassis Front Bar



ATTENTION

A qualified mechanic using normal automotive tools and following all safety measures known should perform installation of this product.



(#1). The Nut Plate (#2) must be pressed against the frame using 1/2" bolts, while at the same time, the 5/8" bolts sandwich the Frame Bracket (#1) and the Nut Plate (#2). See torque chart for all tightening specs.

4. With the coach at normal ride height, install the adjustable end of the Rod Assembly (#12) to the Axle Bracket (#3). Use one of the supplied 3/4" x 3" bolts, two washers, and nut. Be sure that there is a flat washer on each side of the urethane bushings. Assemble loosely. Adjust the length of the rod until you are able to assemble the supplied 3/4" x 3" bolt, two washers, and nut in the Frame Bracket (#1).

5. Tighten the 3/4" bolt and nut on the axle bracket to spec (See torque chart). Tighten 3/4" bolt and nut on the Frame Bracket (#1) to spec. Tighten the jam nut on the Rod Assembly (#12). This completes the installation.

Installation Instructions:

1. Move the coach to a level, flat surface. By driving the coach back and forth 10 feet once or twice, ensure the vehicle's front wheels are straight ahead before starting installation. Set the brake and chock wheels.



2. Begin by removing the nuts on the U-bolt on the rear side of the front axle on the passenger side (see photo). Place the Axle Bracket (#3) on the U-bolt, as in photo. Replace and torque the nuts that were previously removed (See torque chart). Be sure to use Loctite on the bolts before installing.

3. Place the Frame Bracket (#1) on the outside of the driver's side frame rail in rear of the front axle, and loosely secure it with the Nut Plate (#2) with the supplied 5/8" x 2" bolts. Install the two 1/2" x 1" bolts with jam nuts, finger tight for now. Alternate tightening the 5/8" bolts and 1/2" bolts on the Frame Bracket



© 2007 Blue Ox
One Mill Road, Industrial Park
Pender, Nebraska 68047
Phone: (402) 385-3051 • Fax: (402) 385-3360
www.blueox.us